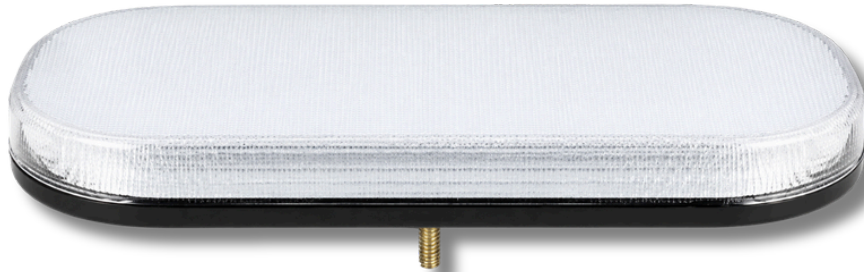


## 363MM MINI LIGHTBAR



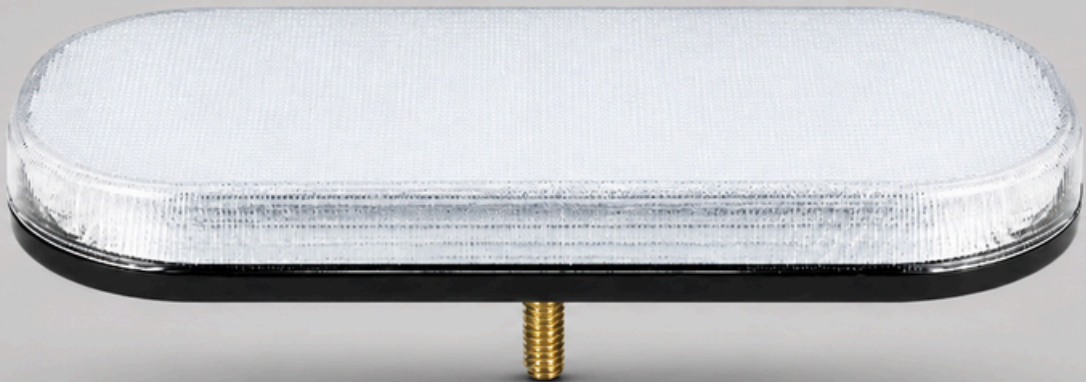
Designed for commercial vehicles, plant machinery, utility fleets and service vehicles, this 363mm Mini LED Light Bar delivers powerful amber warning illumination in a compact, low-profile design. Featuring a durable clear polycarbonate lens and robust aluminium housing, it provides exceptional visibility while maintaining a sleek appearance suitable for a wide range of vehicle applications.

D-LIG-00054

Length: 363mm

Mounting Type: Single Bolt

LEDs: 72



# PRODUCT SPECIFICATION

IP Rating	IP67
Approval	ECE R65 TA1, ECE R65 TA2, SAE J845 Class 1, UKCA, CE, ECE R10, CAP 168/ICAO, CA T13 Class B, CISPR 25 Class 3
Voltage	12-24V
Flash Pattern	26
Housing Material	Aluminium Housing
Lens	PC Lens
Warranty	3 Years
Working Temp	-30°C - +60°C

D-LIG-00055

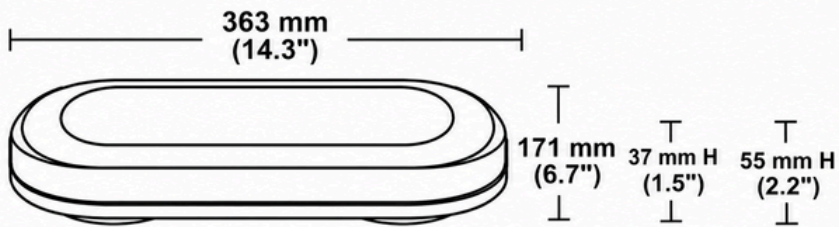
Length: 363mm

Mouting Type: Magnetic

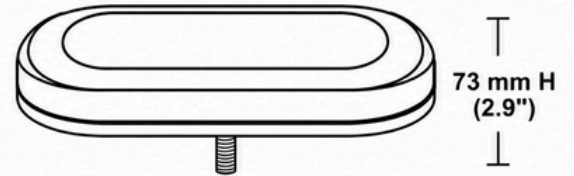
LEDs: 72



# PRODUCT DIMENSIONS (MM)



Magnet base



Single bolt