

## APEX BLACK TOP LIGHTBAR



Our Apex Black Top Lightbar feature a sleek, low-profile design that provides high-visibility warning performance for commercial vehicles. Built with a durable aluminium housing and polycarbonate lens, they are designed for reliability in demanding environments.

Ideal for fleet, utility, and specialist vehicle applications, these light bars offer a dependable and professional warning solution for installers and operators.

| Code        | Length  | Width  | LED | Max Power |
|-------------|---------|--------|-----|-----------|
| D-LIG-00068 | 600 mm  | 259 mm | 228 | 78W       |
| D-LIG-00069 | 900 mm  | 259 mm | 324 | 85W       |
| D-LIG-00070 | 1200 mm | 259 mm | 432 | 116W      |
| D-LIG-00071 | 1500 mm | 259 mm | 528 | 130W      |
| D-LIG-00072 | 1800 mm | 259 mm | 624 | 150W      |

## PRODUCT SPECIFICATION

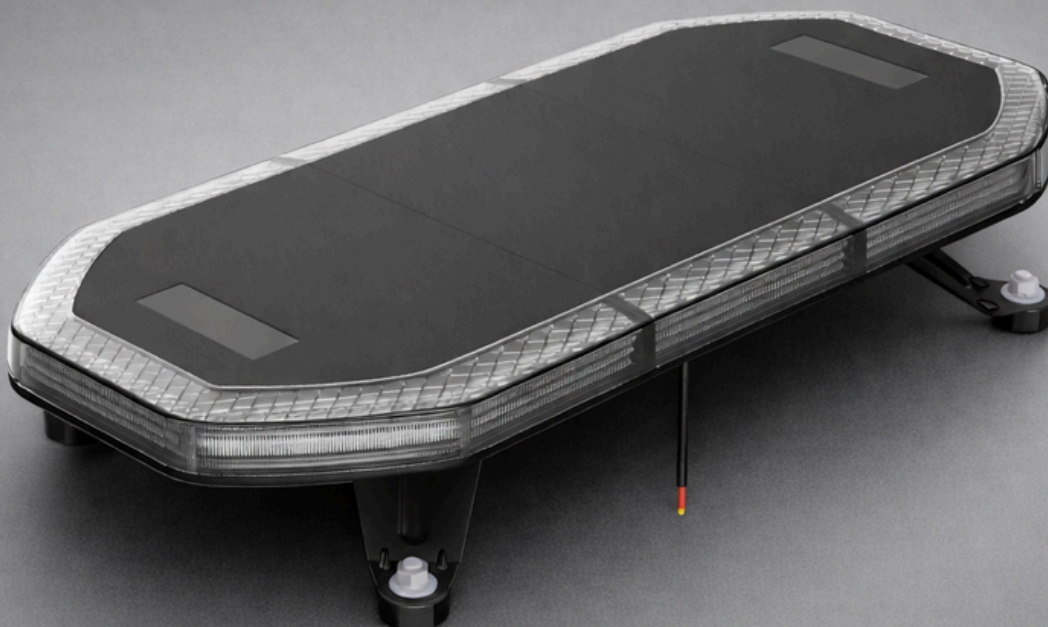
|                  |                                  |
|------------------|----------------------------------|
| IP Rating        | IP67                             |
| Approval         | ECE R10/R65, SAE J845, CISPER 25 |
| Voltage          | 10-30V                           |
| Flash Pattern    | 20                               |
| Housing Material | Aluminium Housing                |
| Lens             | PC Lens                          |
| Warranty         | 3 Years                          |
| Working Temp     | -45°C - +60°C                    |

D-LIG-00068

Length: 600mm

LEDs: 228

Power: 78W



D-LIG-00069

Length: 900mm

LEDs: 324

Power: 85W

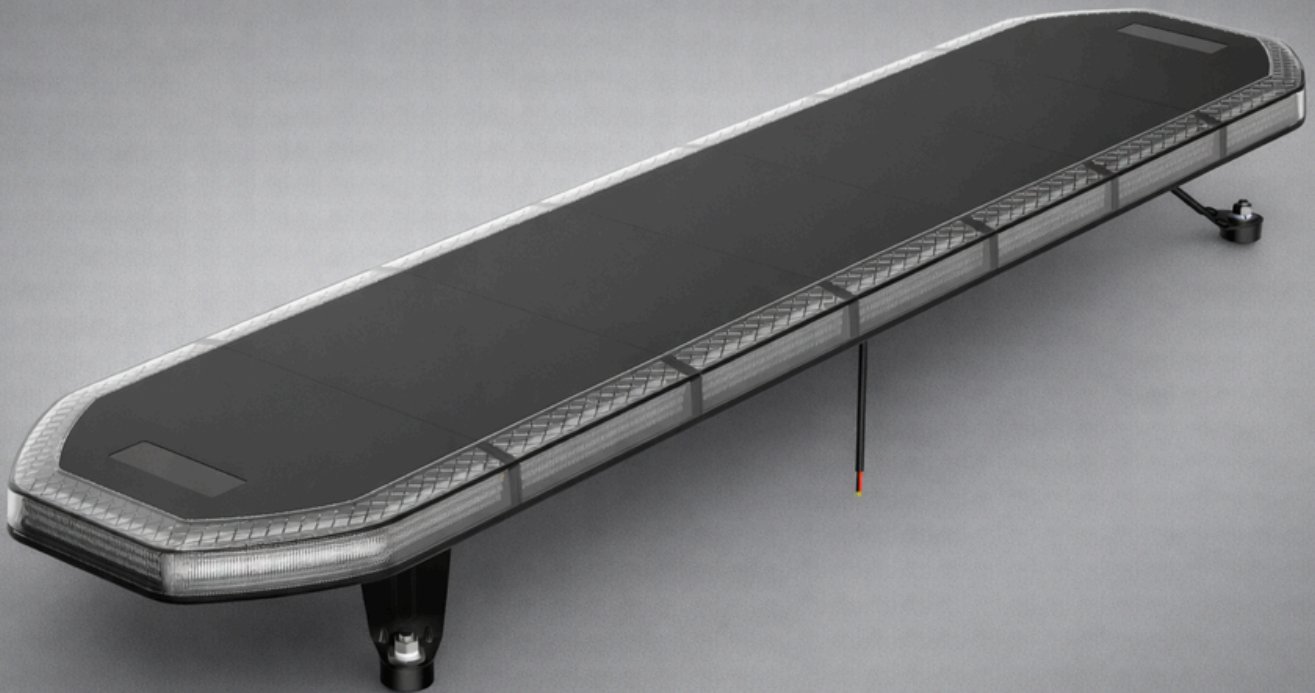


D-LIG-00070

Length: 1200mm

LEDs: 432

Power: 116W



D-LIG-00071

Length: 1500mm

LEDs: 528

Power: 130W

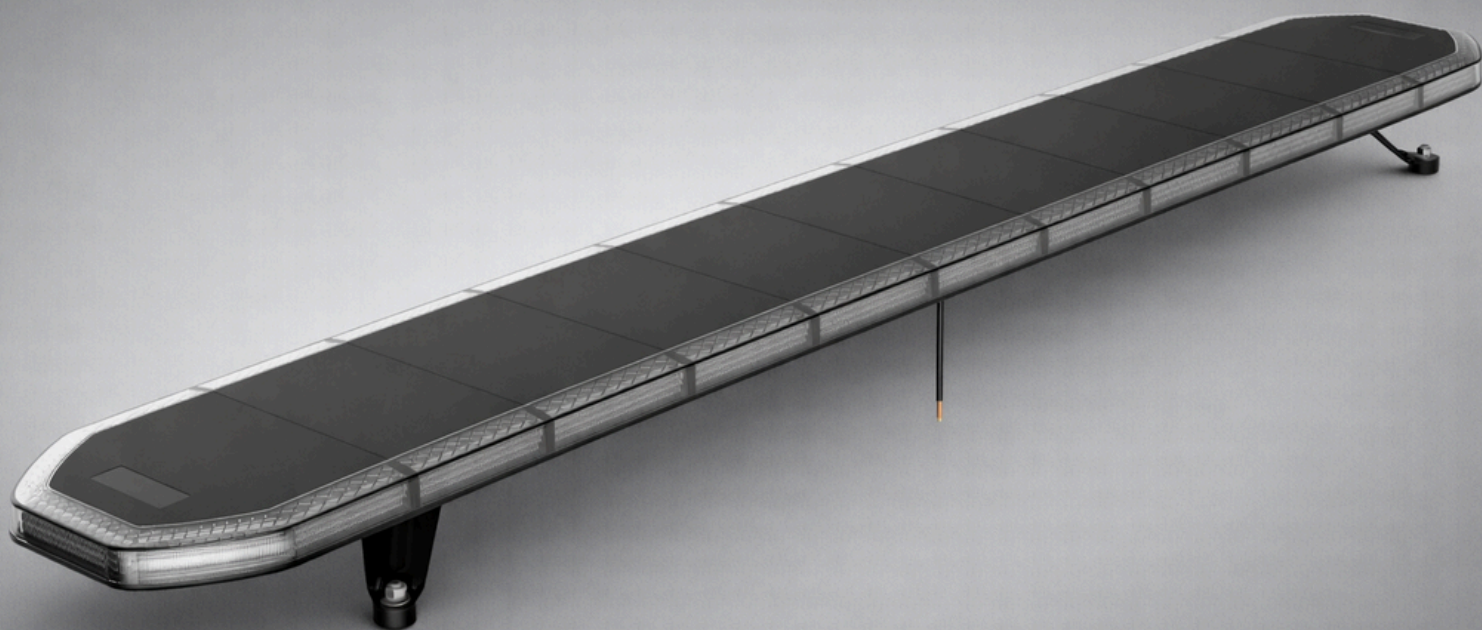


D-LIG-00072

Length: 1800mm

LEDs: 624

Power: 150W



# PRODUCT DIMENSION (MM)

