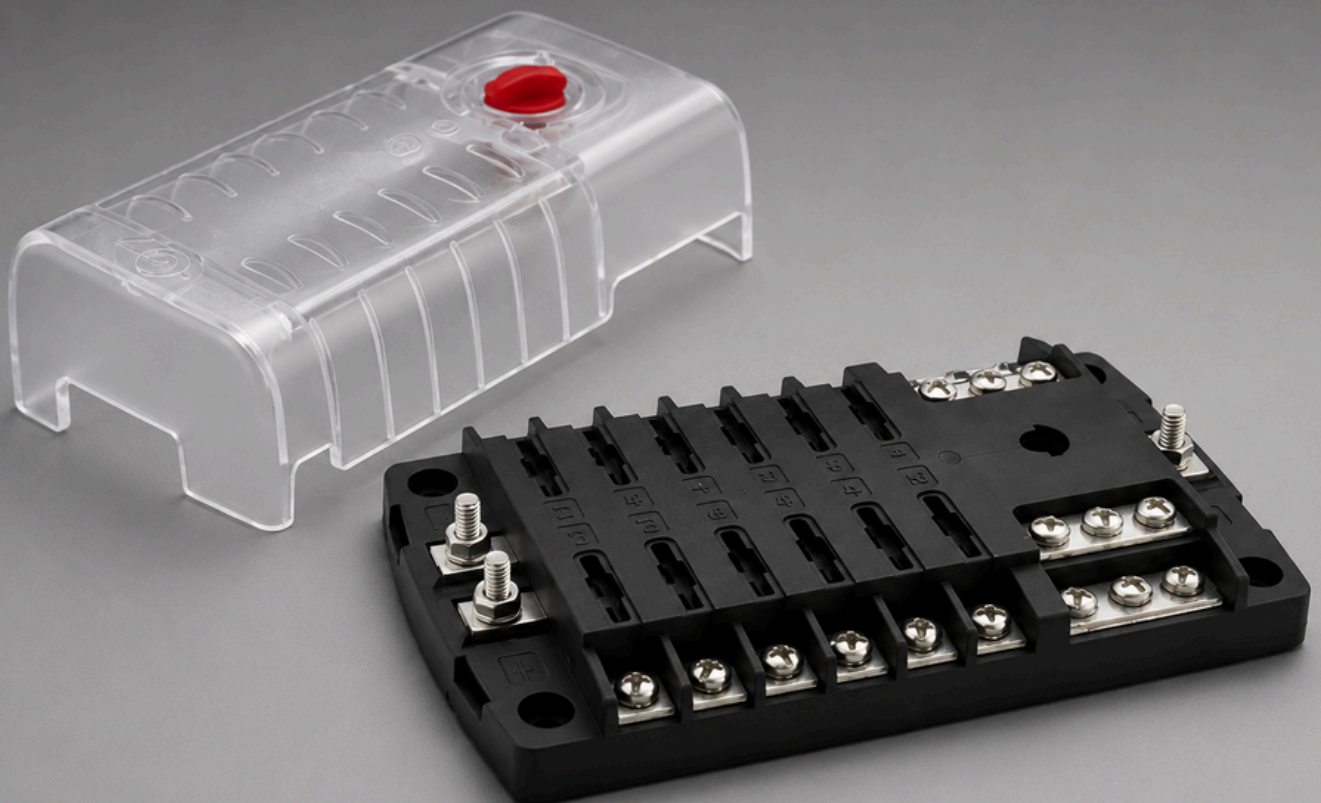


12 WAY STANDARD BLADE FUSE BOX



D-CON-29188

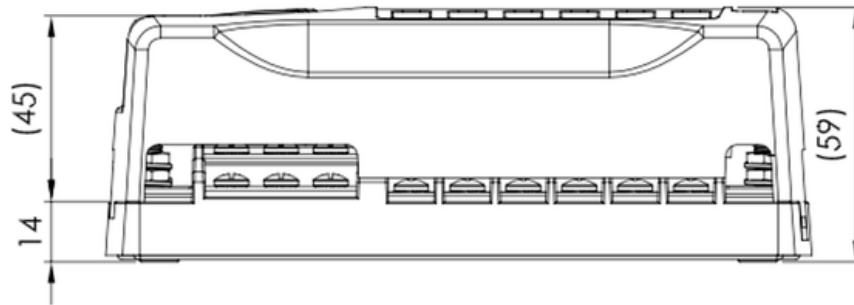
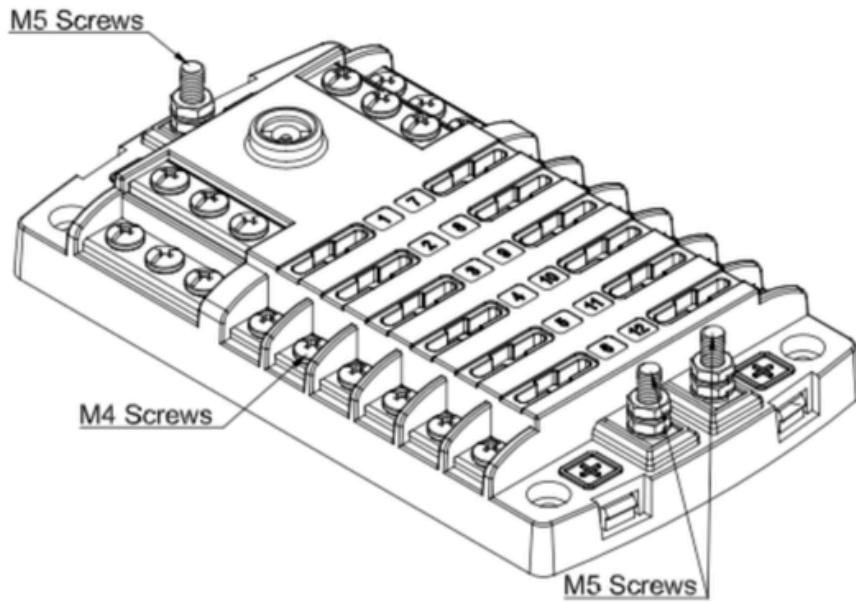
This 12-Way Blade Fuse Box provides a safe and reliable solution for distributing power to multiple vehicle accessories. Suitable for automotive, commercial vehicle, marine and leisure applications, it accepts standard ATO/ATC blade fuses and supports up to 100A input with 30A per individual circuit.



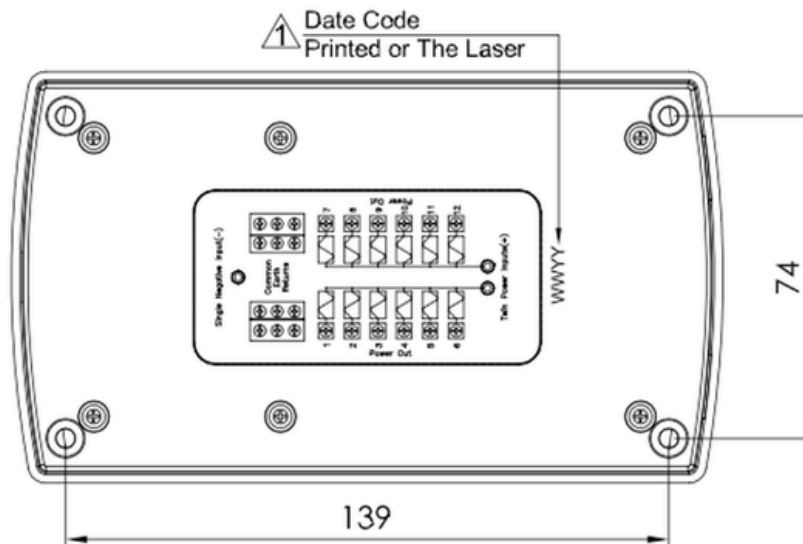
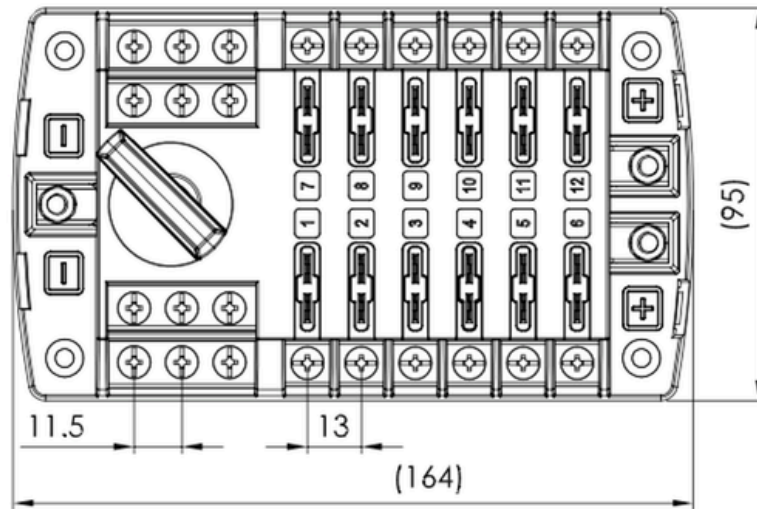
PRODUCT SPECIFICATION

Specification	Details
Housing & Base Material	PBT (UL Flame Rating: 94V-0)
Cover Material	Polycarbonate (PC) (UL Flame Rating: 94V-2)
Terminal Material	Tin-plated copper
Fuse Type	ATO/ATC Blade Fuse
Input Terminal	M5 threaded studs
Maximum Input Current	100A
Maximum Output Current	30A per circuit
Input Wire Size	#4-6 AWG
Output Wire Size	#12-16 AWG
Terminal Torque Rating	20 in-lb (2.25 Nm) max
Mounting Torque Rating	8 in-lb (0.9 Nm) max
Maximum Voltage	32V DC
Operating Temperature	-25°C to +85°C

PRODUCT DIAGRAM



PRODUCT DIAGRAM



PRODUCT DIAGRAM

